



College Ministry at  
**NEWMAN**  
— PARISH —

# DONOR IMPACT REPORT

## 2023-2024



Thank you for your support!

## Mission Statement

With the help of Grace, to form a Catholic community of faith who cultivates beauty, truth, goodness, communion, and justice.

## Vision Statement

A people in right relationship with God and their community.



# Dear Newman Family



**“Jesus, looking at him, loved him.” (Mk. 10:21)**

I have to admit, this is one of my favorite passages in the Gospel. It’s about what we all most want: to be fully known and fully loved. I struggle to understand myself, let alone to love myself. But Jesus does. He satisfies the deepest needs of our hearts.

Of all the beautiful things I get to do as Pastor on a University Campus, two rank among my favorites: hearing confessions—where people come so open and vulnerable, afraid but wanting to be known, forgiven, and loved; and spiritual direction—again, where people open their hearts and souls for encouragement, direction, and guidance, trusting that the priest, like Jesus, will not run away from them, but will also love them.

I think I have one of the best jobs in the world, doing one of the most important things in the world: helping people connect to Christ—the most important and defining relationship any of us will ever have.

You, our benefactors, also known and loved by the Lord, are contributing to a ministry that has no rival: facilitating a relationship with Christ for others. We’re facilitating up a storm here at Mizzou. Our numbers continue to grow. And you are part of it. Thank you for your contributions. As our numbers grow, our ministry needs to grow with it. Newman at Mizzou is ready for the Lord to take us to the next level. And we’re just trying to be vulnerable and loving. Thank you for your part in taking us to that next level.

*Fr. Dan Merz*

**Fr. Dan Merz, SLD** | Pastor

# Encounter

## I am beyond blessed to be a part of Newman...

**Austin Stewart, MU Junior in Accountancy from Jefferson City, MO**

I grew up Catholic and I went to catholic school, but I never knew there was so much more to my Catholic faith than when I discovered Newman! During high school and into my first semester of college, I gave in to my base passions and started living for the world. Long story short, I came back to my faith and started taking it more seriously, but not my catholic faith. I was on fire for God, but in my search for the Truth, there was always something missing. It wasn't until I came to Newman and experienced the sacraments through a new lens. I didn't realize it at the time, but the Truth I was searching for, the Truth I was longing for was Jesus hidden in the Eucharist! Newman is not only a place I call home, but also a place truly sanctified for the Lord. I have made true authentic friends and am a part of a vibrant, lively community that is bound in the love of Christ. I am beyond blessed to be a part of the Newman center and it wouldn't be possible if it wasn't for our donors! For all of those who give financially, whether small or great, we are so very thankful for your generosity. You are our unsung heroes!

*Austin*



# Grow and Serve

## Full of Hope - 17 Years In, by Angelle Hall, Director of Campus Ministry

**A reflection from Director of Campus Ministry, Angelle Hall - (condensed from our Fall 2024 Campus Ministry Newsletter)**

"I planted, Apollos watered, but God caused the growth." 1 Corinthians 3:6

This summer provided a great opportunity to reflect on the ways that the Lord has caused growth in Campus Ministry over these last seventeen years of being at Newman. I was blessed to receive the Fr. Charles Forsyth Award from the Catholic Campus Ministry Association, and our own FOCUS team saw great fruit in this past year, causing them to hit high benchmarks for health according to FOCUS metrics. We are currently seeing great fruit in our campus ministry, and with that, we are looking forward to what the Lord is calling us to in the future. All of the glory belongs to God and much of what is happening today is the fruit of seeds faithfully planted and watered in the past.

There are plenty of wonderful, faithful people who began, cultivated, and stewarded Newman before I began my time at Newman in 2007. What a gift. Plenty of planting, plenty of watering! And the Lord blessed and caused so much growth before I even knew about Newman.

Early on when I joined the staff, I just tried to learn from all the staff, students, and parishioners here. Emily Shull was a great guide (and still is!), and the students taught me so much. That first year, I remember reading all the files in the Campus Ministry office over Christmas break. In those files, I discovered 15 years of hopes and attempts at Catholic small group Bible studies for students. I decided that in my second semester here, we would start a group for students. Seeds had been planted by many faithful people in this kind of effort, and I gave it a try.

Our first group in Spring 2008 was a great group of students who then mostly graduated!

Time to try again! One of the rising sophomores took the reins. That year, it was a small group, but 2-3 people met regularly. JoAnn Shull joined our staff that year. JoAnn took a group of students to a conference with Evangelical Catholic and returned with a model for evangelization that would serve us well. Soon after, we added events to Welcome Week, began CLCs (small groups called Christian Life Communities), and added Peer Ministers. The students from that conference began Ephesians Three, our now 14 year old faith and fellowship



ministry. Other students began the Newwatering, and God was causing the growth. Over the course of spring 2008 - spring 2014, we grew to sustain four Bible studies, including one Greek one!

We were ready to take a big leap! With this Newman began our collaboration with the Fellowship of Catholic University Students (FOCUS) in Fall 2014. Our Campus Ministry staff decided to go all in. That first year, our priests, campus ministry staff, and missionaries made decisions and worked through questions that laid the foundation for our current collaboration and commitment to one mission. Monday through Friday weekday Holy Hours began where we used to have one day a week prior. According to FOCUS at the time, we were the second most successful first year campus. That same year, we grew to have our Awakenings retreat each semester, instead of once a year. We finally were able to implement a model which has ongoing small groups that invited students to retreats, and retreats that drew people in and could sustain them afterwards in the small groups. Adding FOCUS' annual SEEK conference to the mix that year grew opportunities for students in big ways.

Our early years with FOCUS helped to establish small group Bible studies with an invitation to discipleship as a core part of our ministry. In some ways we spent our early years trying to shore up the explosive growth of our first year with FOCUS. And in the 2016-2018, we had our largest Awakenings retreats ever, topping 200 students (both student staff and participants). Our part-time Campus Ministry Intern grew to a full time position renamed as the Resident Campus Minister.

While Covid affected our ability to minister and our students greatly, a deeper foundation of discipleship continued to be laid by our FOCUS missionaries, our team, and our priests. We even added a missionary! Ephesians Three grew and changed to our current 4-week format (guest speaker, rowdy community event, breakout talks, and Adoration with praise and worship), retaining student ownership, student talks, praise and worship, and Ephesians 3:14-21 as its mission.

In just the last few years, the students welcomed our church renovations, and our Bible study participants and commissioned disciples continued to grow. When we ended the year in 2023, 257 students had participated in a Bible study at least one time; when we ended the school year in 2024, that number had grown to 470. Even better, 325 students in the 2023-24 school year attended a Bible study at least 4 times. More students became involved in liturgical ministries, and we had the most FOCUS missionary new hires in the country. Wow! Look at the growth the Lord is causing!

*(continued on the next page)*

It is an exciting time to be at Newman (isn't it always?! This year, from the sacrificial leadership of our students, our Welcome Week efforts were revised to have tabling on campus during Welcome Week, more students helping with Move-In, and more events connected to Miz-zou welcome events. We kept our longtime traditions of the Welcome BBQ and the Mass on the Quad, and brought back Taco Night (sponsored by Mizzou Catholic). Mass on the Quad had over 560 students!

We keep seeing record numbers at our events as we run out to buy more burgers for our BBQ and order pizza when we run out of tacos. Our FOCUS team is anticipating more growth as we look to a future (maybe even later this year!) where we could have 700 students in Bible studies. Our Ignite freshmen retreat saw almost 40 participants, and we are anticipating many Awakeners and staff on our Fall Awakenings 48 Retreat.

Most meaningfully, we will see 75-90 students at Power Hour (Adoration) on a Monday night, and 75+ students at daily Masses. Students can (and do) go to confession 6 days a week. The Lord is changing lives here at Newman.

At our Graduate and Professional Student Welcome Social, one of our alumni who spent 6 years at Newman (undergraduate and graduate student) asked me what it was like for me to look forward to this new school year. Is this year different from other years, or do all the years seem the same? I really appreciate the question! Honestly, I seek and hope to faithfully plant and water where I'm called. That is the same every year. However, I know that the Lord works miracles and causes growth in all kinds of ways, and I am excited to be surprised again by how the Lord will make all things new this year. I invite you to join us or renew your commitment as we water and plant together in hope!



*Angelle*





## Perpetual Giving: Endowment Growth

### Martha Trauth Social Justice Education Endowment

Market value at fiscal year end 2022-2023

\$387,480

Market value at fiscal year end 2023-2024:

\$651,289

Last year, generous donors gave a total of

**\$259,381** to the endowment principal.

Funding the Trauth endowment to \$1.2M principal will allow Newman to hire a full-time Service and Justice Director. This will provide opportunities for students and parishioners alike to volunteer and live out Catholic Social Teaching. Currently, markets withstanding, we are \$300,000 from our goal.

### Campus Ministry Endowment

Fiscal year end 2022-2023

\$2,724,394

Fiscal year end 2023-2024

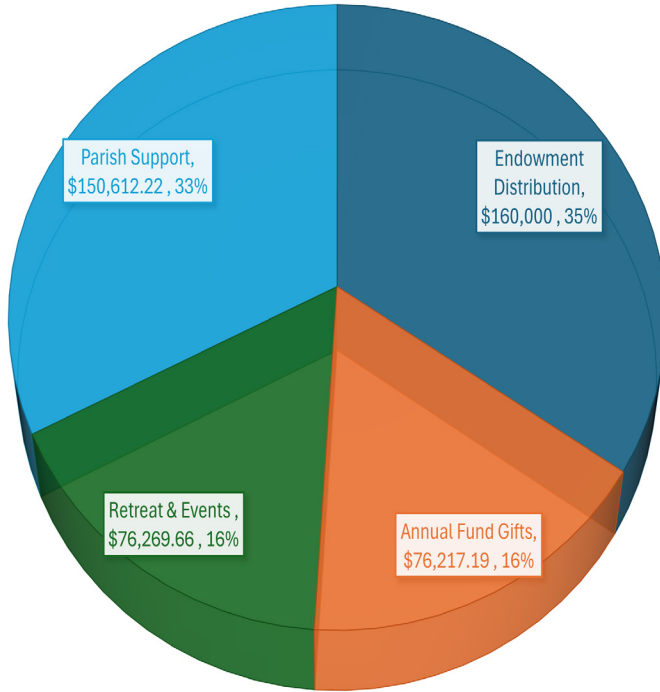
\$2,899,340

Last year, generous donors and Legacy Fund members gave a total of **\$77,034** to the endowment principal.

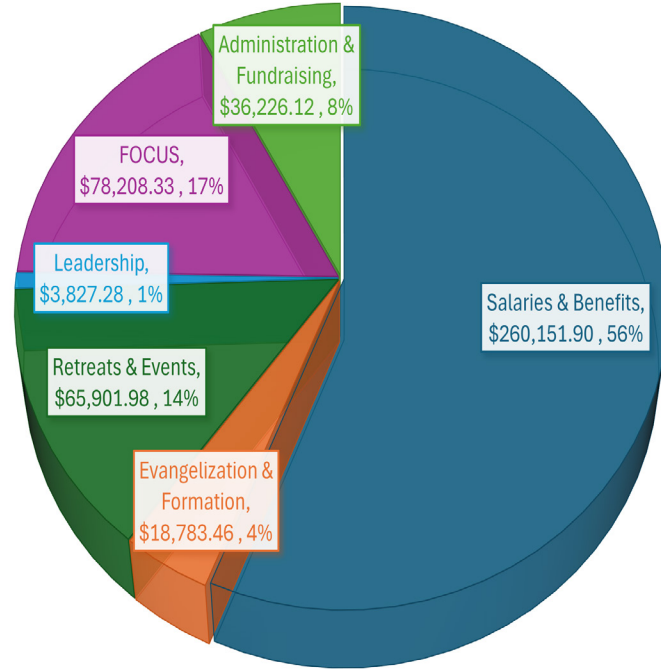
# Financial Report

## 2023-2024

REVENUE \$463,099.07



EXPENSES \$463,099.07





# Partners in Mission 2023-2024

## Who are our donors:

- 122 Alumni
- 12 Alumni Parents of Current Students
- 6 Businesses & Foundations
- 194 Friends of Campus Ministry
- 31 Parents of Alumni
- 199 Parents of Current Students
- 104 Resident Parishioners



Thank you to our business sponsors this past year, mpix and Knights of Columbus Council 7231.



**Giving Tuesday 2023** - we sought to raise \$20,000 for the Martha Traught Social Justice Education endowment. You came through for us and we raised more than \$34,000!

## Did you know?

We are experiencing unprecedented growth. Thanks be to God! More students means more demand for programs and activities and thus more resources. We are seeking to grow our Campus Ministry Endowment to \$5 million over the next three years.



.....  
*Figures listed in this publication are for July 1, 2023 to June 30, 2024.*  
.....

*Please pray for us!*

Come, Holy Spirit and fill the hearts of the students at the University of Missouri, Stephens College and Columbia College with your faith, hope and love. Make your presence known on our campuses and transform the students into your hands and feet for the world.



## TWO WAYS YOU CAN MAKE A DIFFERENCE:

1. Pray for our students, especially for the unique challenges they will face in this coming year.
2. Become a monthly donor ([comoneyman.org/give](http://comoneyman.org/give))



# COR AD COR CIRCLE

After providing for your family, would you consider including Newman in your will? When you commit to giving a planned gift, you continue to support the Church, create a legacy, and benefit yourself and your heirs.

[comoneyman.org/planned-giving](http://comoneyman.org/planned-giving)



## Newman Parish

602 Turner Avenue | Columbia, Missouri 65201  
(573) 449-5424 | [www.comoneyman.org/give](http://www.comoneyman.org/give)

Follow us:   [.com/comoneyman](https://www.comoneyman.org)